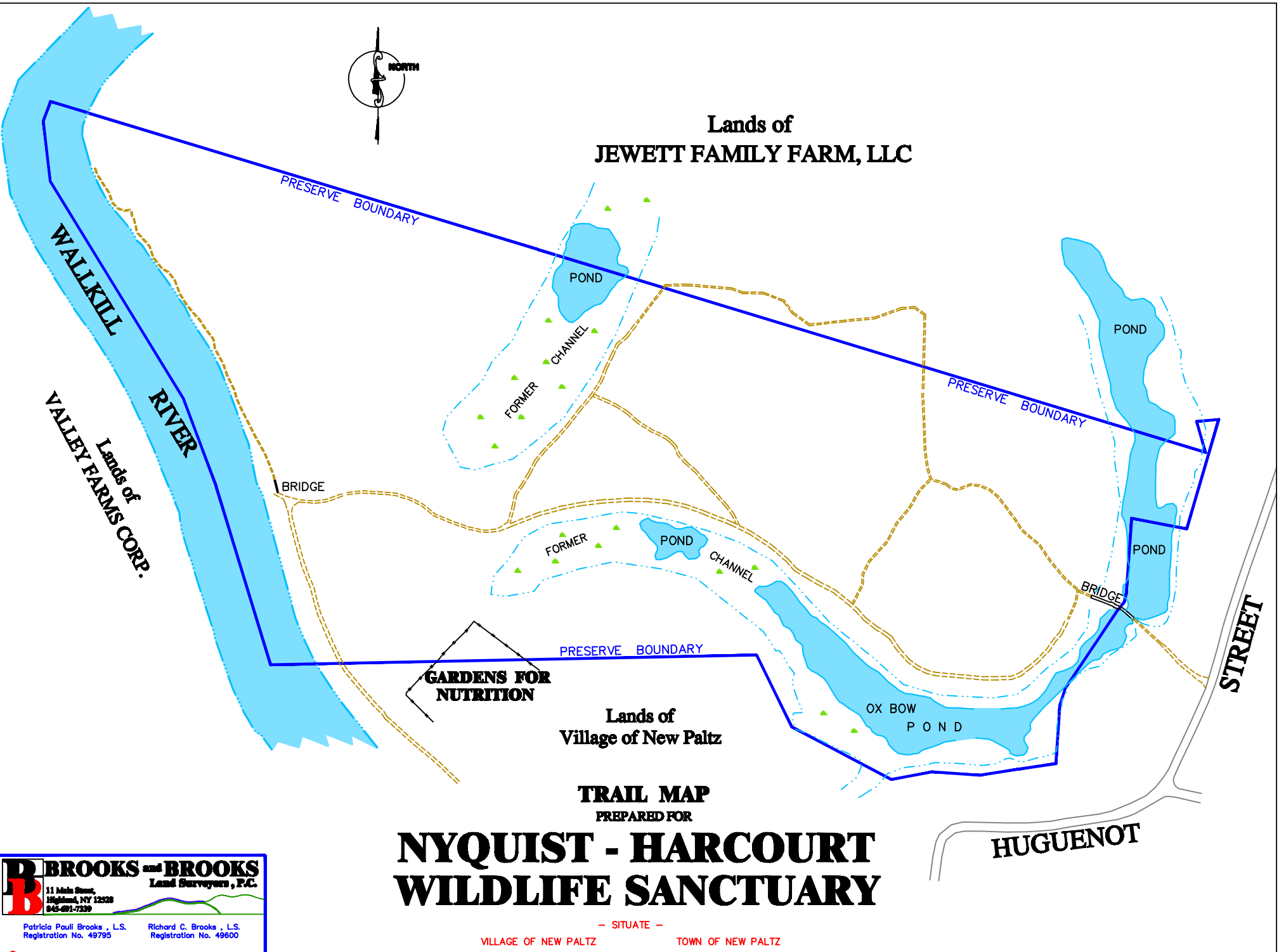


**Lands of
JEWETT FAMILY FARM, LLC**



**GARDENS FOR
NUTRITION**

**Lands of
Village of New Paltz**

**TRAIL MAP
PREPARED FOR
NYQUIST - HARCOURT
WILDLIFE SANCTUARY**

HUGUENOT

STREET

B BROOKS and BROOKS
Land Surveyors, P.C.

11 Main Street,
Highland, NY 12528
845-691-7329

Patricia Paul Brooks, L.S. Registration No. 49795
Richard C. Brooks, L.S. Registration No. 49600

© Copyright, 2012, by Brooks and Brooks, L.S., P.C.
23 March, 2012 JOB#7559, DRAWING\7817trail.DWG

- SITUATE -
VILLAGE OF NEW PALTZ TOWN OF NEW PALTZ
ULSTER COUNTY, NEW YORK